

# WALL2FLOOR



# WALL2FLOOR

## SISTEMA MICROCEMENTO PER LA DECORAZIONE DI PARETI E PAVIMENTI

Wall2Floor è un sistema multistrato che permette di ottenere, su superfici orizzontali e verticali interne, rivestimenti continui, secondo le più recenti tendenze dell'architettura di alto pregio ad uso civile.

Il sistema Wall2Floor è composto da:

**Wall2Floor Rasal NF:** rasante cementizio di preparazione.

**Wall2Floor Top Coat NF:** rivestimento decorativo per superfici orizzontali e verticali.

**Wall2Floor Componente B:** additivo in polvere specifico per Wall2Floor Top Coat NF.

**Wall2Floor Primer A:** componente A per primer bi-componente ad elevato potere penetrante.

**Wall2Floor Primer B:** componente B per primer bi-componente ad elevato potere penetrante.

**Wall2Floor Clear Finish Matt A:** componente A per finitura poliuretana bi-componente all'acqua, opaca.

**Wall2Floor Clear Finish Satin NF A:** componente A per finitura poliuretana bi-componente all'acqua, satinata.

**Wall2Floor Clear Finish Glossy A:** componente A per finitura poliuretana bi-componente all'acqua, lucida.

**Wall2Floor Clear Finish NF B:** componente B per finitura poliuretana bi-componente opaca, satinata e lucida.

Per maggiori informazioni consultare la scheda tecnica.

## MICROCEMENT SYSTEM FOR THE DECORATION OF WALLS AND FLOORS

Wall2Floor is a multi-layered system that permits to achieve, on both horizontal and vertical interior surfaces, seamless continuous coating according to the most cutting-edge trends in high-end architecture.

The system is composed of:

**Wall2Floor Rasal NF:** levelling cement-based product for the preparation of the surface

**Wall2Floor Top Coat NF:** decorative coating for horizontal and vertical surfaces

**Wall2Floor Component B:** specific additive in powder for Wall2Floor Top Coat NF.

**Wall2Floor Primer A:** A component for high penetrating bi-component primer.

**Wall2Floor Primer B:** B component for high penetrating bi-component primer.

**Wall2Floor Clear Finish Matt A:** A component for bi-component polyurethane finish, matt.

**Wall2Floor Clear Finish Satin NF A:** A component for bi-component polyurethane finish, satin.

**Wall2Floor Clear Finish Glossy A:** A component for bi-component polyurethane finish, glossy.

**Wall2Floor Clear Finish NF B:** B component for bi-component polyurethane finish, matt, satin and glossy.

For more information please check the technical data sheet.

## SYSTÈME MICROBÉTON POUR LA DÉCORATION DE MURS ET SOLS

Wall2Floor est un système multicouches qui permet d'obtenir une finition continue sur surfaces horizontales et verticales, en ligne avec les plus modernes tendances de l'architecture.

Le système Wall2Floor est composé par :

**Wall2Floor Rasal NF:** Pâte pour rasage à base de béton.

**Wall2Floor Top Coat NF:** Revêtement décoratif à base de chaux.

**Wall2Floor Component B:** Additif en poudre spécifique pour Wall2Floor Top Coat.

**Wall2Floor Primer A:** Composant A pour primer bi-composant fortement pénétrant.

**Wall2Floor Primer B:** Composant B pour primer bi-composant fortement pénétrant.

**Wall2Floor Clear Finish Matt A:** Composant A pour finition polyethnique bi-composant à base d'eau, mat.

**Wall2Floor Clear Finish Satin NF A:** Composant A pour finition polyethnique bi-composant à base d'eau, version satin.

**Wall2Floor Clear Finish Glossy A:** Composant A pour finition polyethnique bi-composant à base d'eau, lucide.

**Wall2Floor Clear Finish NF B:** Composant B A pour finition polyethnique bi-composant à base d'eau, mat, satin et lucide.

Pour plus d'informations consulter la fiche technique.

## MIKROZEMENTSYSTEM FÜR DIE DEKORATION VON HORIZONTALEN UND VERTIKALEN INNENFLÄCHEN

Das System Wall2Floor NF ist ideal für die Anwendung im Bereich des Privat- oder Gewerbehwohnungsbaus, Wohnungen, Büros, Geschäfte, Showrooms. Das System ermöglicht Sanierungseingriffe an horizontalen und vertikalen Untergründen.

Das System Wall2Floor NF besteht aus:

**Wall2Floor Rasal NF:** Zementspachtelmasse zur Vorbereitung.

**Wall2Floor Top Coat NF:** Dekorative Beschichtung für horizontale und vertikale Oberflächen.

**Wall2Floor Component B:** Spezifischer Zusatzstoff in Pulverform für Wall2Floor Top Coat NF.

**Wall2Floor Primer A:** Komponente A für Zweikomponenten-Primer mit hoher Eindringkraft.

**Wall2Floor Primer B:** Komponente B für Zweikomponenten-Primer mit hoher Eindringkraft.

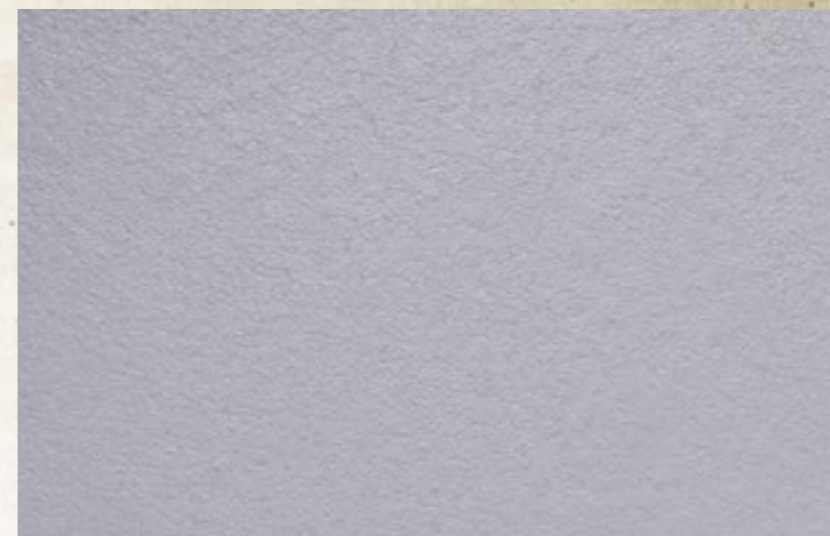
**Wall2Floor Clear Finish Matt A:** Komponente A für matte Zweikomponenten-Polyurethan-Oberflächenbehandlung auf Wasserbasis.

**Wall2Floor Clear Finish Satin NF A:** Komponente A für satinierte Zweikomponenten-Polyurethan-Oberflächenbehandlung auf Wasserbasis.

**Wall2Floor Clear Finish Glossy A:** Komponente A für glänzende Zweikomponenten-Polyurethan-Oberflächenbehandlung auf Wasserbasis.

**Wall2Floor Clear Finish NF B:** Komponente B für matte, satinierte und glänzende Zweikomponenten-Polyurethan-Oberflächenbehandlung.

Für weitere Info siehe bitte technisches Merkblatt.



W2F 041

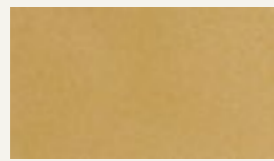


W2F 042

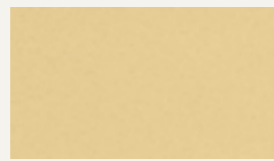


W2F 043

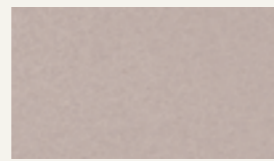




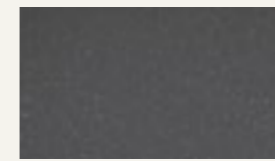
W2F 020



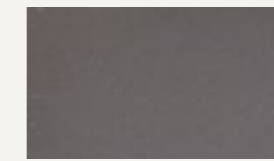
W2F 021



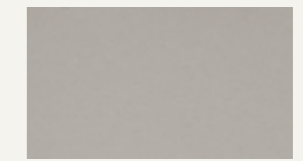
W2F 028



W2F 058



W2F 057



W2F 055



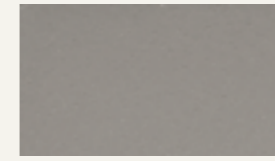
W2F 023



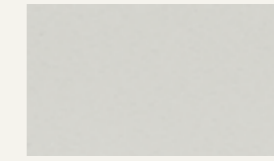
W2F 035



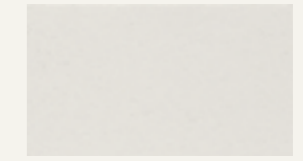
W2F 037



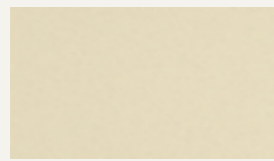
W2F 056



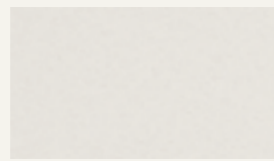
W2F 060



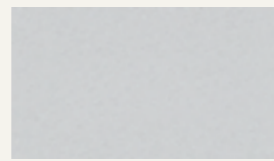
W2F 062



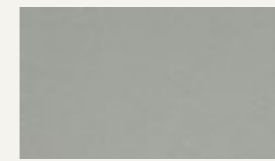
W2F 022



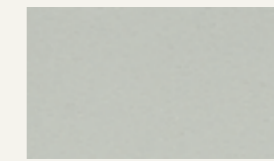
W2F 034



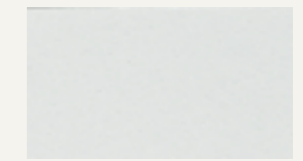
W2F 054



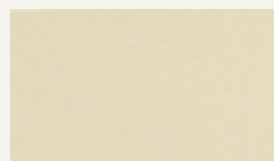
W2F 048



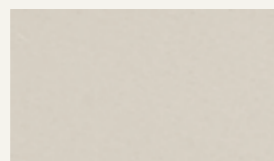
W2F 053



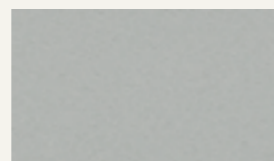
W2F 063



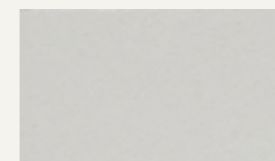
W2F 024



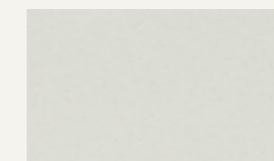
W2F 033



W2F 047



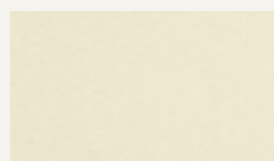
W2F 061



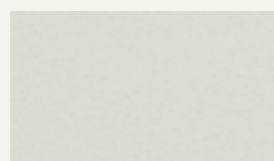
W2F 059



W2F 064



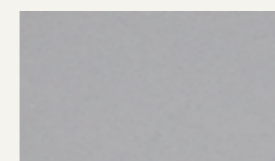
W2F 025



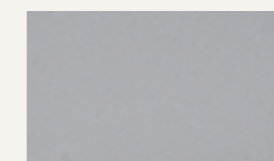
W2F 032



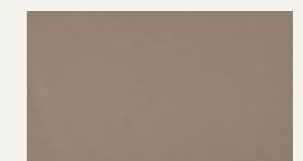
W2F 049



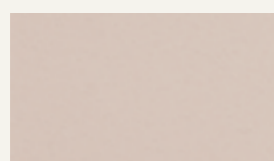
W2F 038



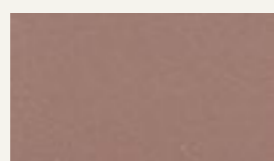
W2F 041



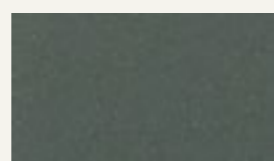
W2F 044



W2F 026

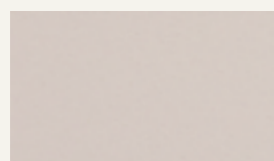


W2F 031

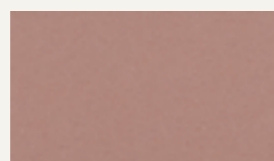


W2F 050

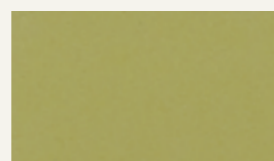
# WALL2FLOOR



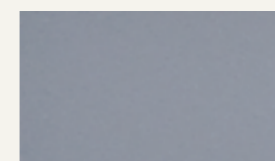
W2F 027



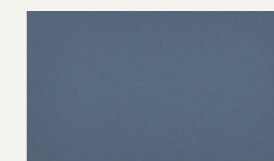
W2F 030



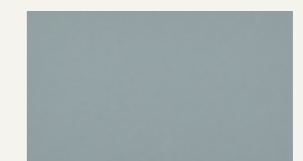
W2F 052



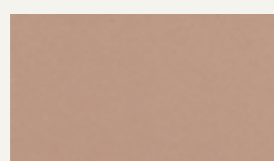
W2F 039



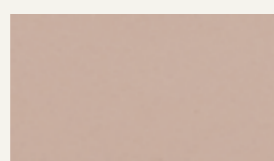
W2F 042



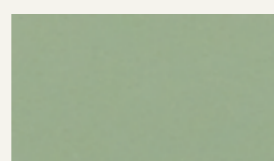
W2F 045



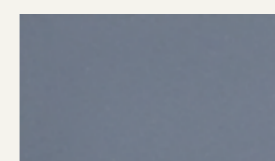
W2F 036



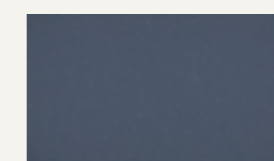
W2F 029



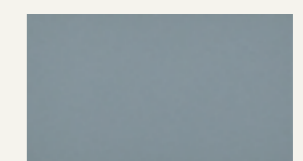
W2F 051



W2F 040



W2F 043



W2F 046

# WALL2FLOOR

Pietra è materia, presente e passato senza confini.  
Forza e colore. Wall2Floor esalta la materia, come  
elemento di decorazione contemporaneo, unico,  
inimitabile.

Stone is earth, past and future, limitless yet  
contemporary. Strength and colour. Wall2Floor  
celebrates materials, as an element of urban  
decoration, unique, incomparable.



Le tonalità qui riprodotte, pur avvicinandosi a quelle di fornitura, sono indicative. Per una corretta lettura dei colori si raccomanda di consultare questa cartella alla luce solare.  
Colours and patterns illustrated are for guidance only. The exact pattern, colours and shades may vary from those shown.

**novacolor**<sup>TM</sup>  
I colori dell'Architettura

NOVACOLOR srl - 47122 Forlì - Italia  
Tel +39 0543 401840 - fax +39 0543 414585  
Via U. Aldrovandi, 10 - info@novacolor.it



NOVACOLOR is committed to reduce the environmental impact by producing friendly materials.

Made in Italy



**AZIENDA CON SISTEMA  
DI GESTIONE QUALITÀ  
CERTIFICATO DA DNV GL  
= ISO 9001 =**

**COMPANY WITH  
QUALITY SYSTEM  
CERTIFIED BY DNV GL  
= ISO 9001 =**