

# WALL2FLOOR POLVERE

Finitura cementizia in polvere, per superfici  
orizzontali e verticali interne

*Cement finish in powder for horizontal  
and vertical interior surfaces*

novacolor™  
I colori dell'Architettura



# WALL2FLOOR POLVERE

## IT - Finitura cementizia in polvere, per superfici orizzontali e verticali interne

Utilizzare 4,4-5,2 l di acqua pulita per ogni sacco da 20 kg di Wall2Floor Polvere e miscelare meccanicamente. Tempo di vita dell'impasto: circa 60 minuti a 25°C, UR=60%.

Applicazione in uno strato con spatola inox.

Resa (riferita alla polvere): 0,4-0,8 kg/m<sup>2</sup>, per singolo strato.

Per maggiori informazioni, consultare la scheda tecnica.



## EN - Cement finish in powder for horizontal and vertical interior surfaces

Dilute one bag of 20 kg with 4,4-5,2 l of clean water and mix it using a mechanic drill. Product pot life: 60 minutes approximately (T=25°C, UR=60%).

Application in one layer with a stainless steel trowel.

Yield (referred to the powder): 0,4-0,8 kg/m<sup>2</sup> for each layer.

For more information please check the technical data sheet.

## FR - Finition à base de béton en poudre, pour surfaces horizontales et verticales internes

Utiliser 4,4-5,2 l d'eau propre pour chaque sac de 20 kg de produit.

Ajouter avec un mélangeur automatique avec spirale. Temps de vie de la pâte : 60 minutes environ à 25°C, UR=60%.

Appliquer une couche avec truelle en inox.

Rendement (référé à la poudre) : 0,4-0,8 kg/m<sup>2</sup>, pour chaque couche.

Pour plus d'informations consulter la fiche technique.



## DE - Mikrozement im Pulverform für die Ausführung von fugenlosen Oberflächen auf Wänden und Boden

4,4-5,2 l sauberes Wasser für jeden 20 kg Sack Wall2Floor Powder.

Mechanisch mischen. Lebensdauer der Mischung: ca. 60 Minuten bei 25°C, relative Luftfeuchtigkeit = 60%.

Anwendung in einer Schicht mit Edelstahlkelle.

Ausbeute (bezogen auf das Pulver): 0,4-0,8 kg/m<sup>2</sup> pro Einzelschicht.

Weitere Informationen finden Sie im Datenblatt.

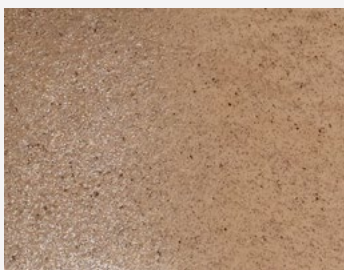
Pour plus d'informations consulter la fiche technique.

# WALL2FLOOR POLVERE



WALL2FLOOR POLVERE 20200 & CLEAR FINISH BI-COMPONENT SATIN

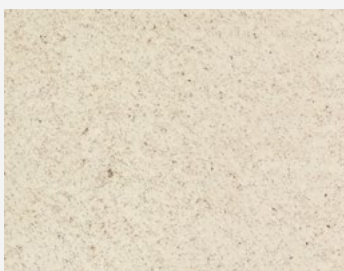




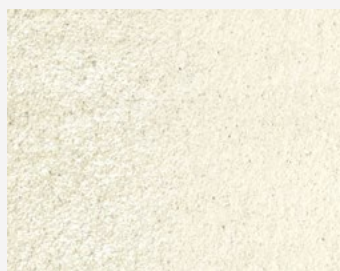
W2F POLVERE 20201 & CF GLOSSY



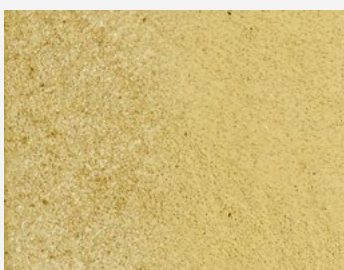
W2F POLVERE 20205 & CF SATIN



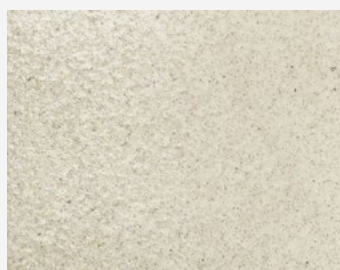
W2F POLVERE 20202 & CF MATT



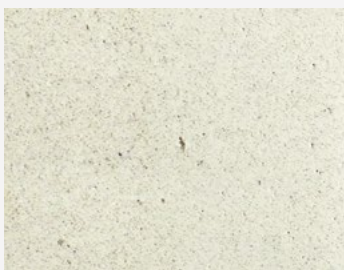
W2F POLVERE 20206 & CF SATIN



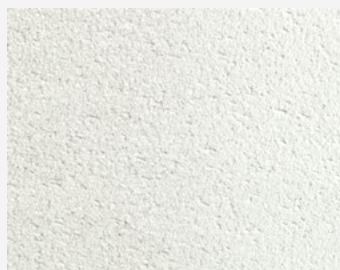
W2F POLVERE 20203 & CF COUNTERTOP SATIN



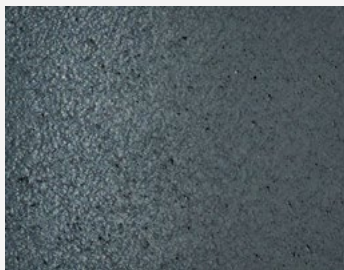
W2F POLVERE 20207 & CF SATIN



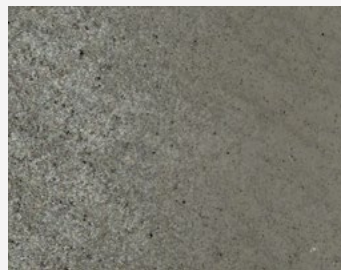
W2F POLVERE 20204 & CF COUNTERTOP ULTRA MATT



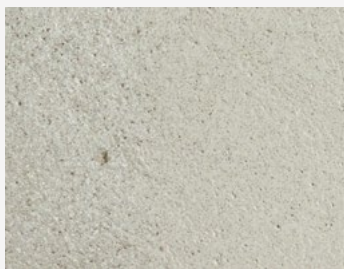
W2F POLVERE 20208 & CF SATIN



W2F POLVERE 20209 & CF SATIN



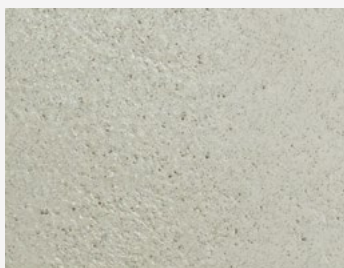
W2F POLVERE 20213 & CF SATIN



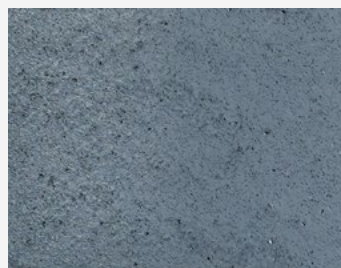
W2F POLVERE 20210 & CF SATIN



W2F POLVERE 20214 & CF SATIN



W2F POLVERE 20211 & CF SATIN



W2F POLVERE 20215 & CF SATIN



W2F POLVERE 20212 & CF SATIN



W2F POLVERE 20216 & CF SATIN



## Wall2Floor Polvere

Wall2Floor Polvere fa parte del sistema Wall2Floor per pareti e pavimenti. Wall2Floor Polvere può essere scelto in alternativa al prodotto Wall2Floor Top Coat / Wall2Floor Top Coat Fine.

Wall2Floor Polvere is part of Wall2Floor system for walls and floors. Wall2Floor Polvere can be selected as an alternative to the product Wall2Floor Top Coat / Wall2Floor Top Coat Fine.



Certificato A+ per le basse emissioni di sostanze volatili nell'aria  
A+ Certified for the low emissions of volatile substances in the air

Le tonalità di questa cartella hanno valore puramente indicativo. The color samples in this color chart should be considered purely indicative.

Photo cover Viva Color, Serbia

**novacolor**<sup>TM</sup>  
I colori dell'Architettura

NOVACOLOR Srl  
Via Ulisse Aldrovandi 10 - 47122 Forlì (FC) Italy  
Tel +39 0543 401840 - Fax +39 0543 414585  
info@novacolor.it



Novacolor is committed to reduce the environmental impact by producing friendly materials.



AZIENDA CON  
SISTEMA DI GESTIONE  
CERTIFICATO DA DNV GL  
= ISO 9001 =  
= ISO 14001 =

COMPANY WITH  
MANAGEMENT SYSTEM  
CERTIFIED BY DNV GL  
= ISO 9001 =  
= ISO 14001 =

Made in Italy